



GARDEN  TECH[®]
SEVIN[®]
Insect Killer
 Concentrate



Kills By Contact



Guaranteed Results or your money back



Lasts 3 months[†]



PROTECT YOUR GARDEN & FLOWERS

FROM LISTED DAMAGING PESTS

People and pets may re-enter treated area after spray dries

Active Ingredient:	By. Wt.
Zeta-Cypermethrin*	0.35%
Other Ingredients:	99.65%
AAV05062IRT	100.00%

*EXCEPT FIRE ANTS, FLEAS, TICKS AND MOSQUITOES WHEN USED AS DIRECTED

Net Contents: 1 Gallon (3.78 L)

KEEP OUT OF REACH OF CHILDREN

(* This product contains 0.03 pounds active ingredient per gallon.)

* Cis/trans ratio: Max. 75% (±) cis and min. 25% (±) trans



GARDEN  TECH.
SEVIN[®]
 Insect Killer
 Concentrate

KILLS OVER 500 LISTED INSECTS!



Visible results
in minutes



Protects over 200
listed fruits &
vegetables



For residential
outdoor use



How much to use:
4 fl. oz. per gallon of water
Treats 8,000 sq. ft. of lawn



Ants



Hornworms



Stink
Bugs



Japanese
Beetles



Aphids



Colorado
Potato
Beetles



Whiteflies



Cabbage
Loopers






Open for Precautionary Statements, First Aid, and Complete Directions For Use
 Distributed by: TechPac, L.L.C., 1000 Parkwood Circle, Suite 700, Atlanta, GA, 30339
 EPA Reg. No. 279-3347-71004
 EPA Est. 67572-GA-1, 67572-GA-2
 Subscript used is first letter of run code on container.
 If you have a medical emergency, please call 1-(800)-420-9347
www.gardentech.com

AAV0506ZIRT



GARDEN TECH[®] **SEVIN[®]** **Insect Killer** Concentrate

Quick Facts

<p>FIRST AID</p> <p>If swallowed</p> <ul style="list-style-type: none"> • Call poison control center or doctor immediately for treatment advice. • Have person sip a glass of water if able to swallow. • Do not induce vomiting unless told to do so by the poison control center or doctor. • Do not give anything by mouth to an unconscious person. <p>If in eyes</p> <ul style="list-style-type: none"> • Hold eye open and rinse slowly and gently with water for 15-20 minutes. • Remove contact lenses, if present, after the first 5 minutes, then continue rinsing eye. • Call a poison control center or doctor for treatment advice. 	<p>PRODUCT FACTS</p>  <p>Kills by contact Visible results in minutes Allow product to dry completely before people and pets return to the lawn</p>
<p>HOTLINE NUMBER</p> <p>Have the product container or label with you when calling a poison control center or doctor, or going for treatment. You may also contact 1-800-420-9347 for Emergency Assistance.</p>	<p>WHERE TO USE</p>  <p>Fruit and Vegetable Gardens, Ornamental Plants and Shrubs, Flowers and Ground Covers, Around Structures, Lawns</p>
<p>NOTE TO PHYSICIAN</p> <p>Skin contact (vapor or powder) may be followed by transient tingling or numbness, usually of the face, but this subsides without treatment. This product is a pyrethroid. If large amounts have been ingested, the stomach and intestines should be evacuated. Treatment is symptomatic and supportive.</p> <p>For Information Regarding the Use of this Product Call 1-866-945-5033.</p>	<p>FRUITS & VEGETABLES</p>  <p>Protects over 200 listed fruits and vegetables Tomato, Pepper, Squash, Cucumber, Broccoli, Kale, Lettuce, Blackberry, Carrot</p>
<p>PRECAUTIONARY STATEMENTS</p> <p>ENVIRONMENTAL HAZARDS</p> <p>This pesticide is extremely toxic to fish, aquatic invertebrates, oysters and shrimp. To protect the environment, do not allow pesticide to enter or run off into storm drains, drainage ditches, gutters or surface waters. Applying this product in calm weather when rain is not predicted for the next 24 hours will help to ensure that wind or rain does not blow or wash pesticide off the treatment area. Rinsing application equipment over the treated area will help avoid run off to water bodies or drainage systems. Care should be used when spraying to avoid fish and reptile pets in/around ornamental ponds. This product is highly toxic to bees exposed to direct treatment or residues on blooming crops or weeds. Do not apply this product or allow it to drift to blooming crops or weeds if bees are foraging the treatment area.</p>	<p>KILLS</p>  <p>Imported Cabbageworm, Cutworms, Armyworms, Flea Beetles, Stink Bugs, Whiteflies, Aphids, Spotted Lanternfly, Japanese Beetles and other listed lawn & garden insects</p>
<p>Storage and Disposal</p> <p>Pesticide Storage: Store in original container in a cool dry area away from heat or open flame and in an area inaccessible to children and pets. Keep from freezing.</p> <p>PESTICIDE DISPOSAL AND CONTAINER HANDLING: Nonrefillable container. Do not reuse or refill this container. If empty: Place in trash or offer for recycling if available. If partly filled: Call your local solid waste agency for disposal instructions. Never place unused product down any indoor or outdoor drain.</p>	<p>HOW MUCH TO USE</p>  <p>4 fl. oz. per gallon of water Treats 8,000 sq. ft. of lawn</p>

Distributed by:
TechPac, L.L.C.
1000 Parkwood Circle, Suite 700, Atlanta, GA 30339
EPA Reg. No. 279-3347-71004
EPA Est. 67572-GA-1_A, 67572-GA-2_B
Subscript used is first letter of run code on container.

GardenTech is a registered trademark of Gulfstream Home & Garden, Inc.
Sevin is a registered trademark of Tessenlerlo Kerley, Inc.



GARDEN  TECH.
SEVIN[®]
Insect Killer
 Concentrate

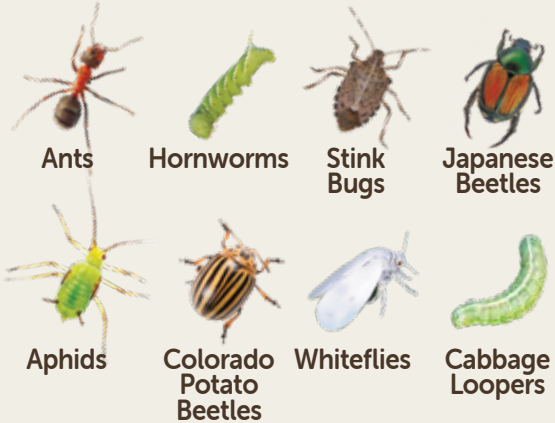
KILLS OVER 500 LISTED INSECTS!


 Visible results
 in minutes


 Protects over 200
 listed fruits &
 vegetables


 For residential
 outdoor use


 How much to use:
 4 fl. oz. per gallon of water
 Treats 8,000 sq. ft. of lawn



Open for Precautionary Statements, First Aid, and Complete Directions For Use
 Distributed by: TechPac, L.L.C., 1000 Parkwood Circle, Suite 700, Atlanta, GA, 30339
 EPA Reg. No. 279-3347-71004
 EPA Est. 67572-GA-1, 67572-GA-2.
 Subscript used is first letter of run code on container.
 If you have a medical emergency, please call 1-(800)-420-9347
www.gardentech.com

AAV0506ZIRT



FIRST AID

If swallowed	<ul style="list-style-type: none"> • Call poison control center or doctor immediately for treatment advice. • Have person sip a glass of water if able to swallow. • Do not induce vomiting unless told to do so by the poison control center or doctor. • Do not give anything by mouth to an unconscious person.
If in eyes	<ul style="list-style-type: none"> • Hold eye open and rinse slowly and gently with water for 15-20 minutes. • Remove contact lenses, if present, after the first 5 minutes, then continue rinsing eye. • Call a poison control center or doctor for treatment advice.

HOTLINE NUMBER

Have the product container or label with you when calling a poison control center or doctor, or going for treatment. You may also contact 1-800-420-9347 for Emergency Assistance.

NOTE TO PHYSICIAN

Skin contact (vapor or powder) may be followed by transient tingling or numbness, usually of the face, but this subsides without treatment. This product is a pyrethroid. If large amounts have been ingested, the stomach and intestines should be evacuated. Treatment is symptomatic and supportive.

For Information Regarding the Use of this Product Call 1-866-945-5033.

PRECAUTIONARY STATEMENTS ENVIRONMENTAL HAZARDS

This pesticide is extremely toxic to fish, aquatic invertebrates, oysters and shrimp. To protect the environment, do not allow pesticide to enter or run off into storm drains, drainage ditches, gutters or surface waters. Applying this product in calm weather when rain is not predicted for the next 24 hours will help to ensure that wind or rain does not blow or wash pesticide off the treatment area. Rinsing application equipment over the treated area will help avoid run off to water bodies or drainage systems. Care should be used when spraying to avoid fish and reptile pets in around ornamental ponds. This product is highly toxic to bees exposed to direct treatment or residues on blooming crops or weeds. Do not apply this product or allow it to drift to blooming crops or weeds if bees are foraging the treatment area.

DIRECTIONS FOR USE

It is a violation of Federal law to use this product in a manner inconsistent with its labeling. SHAKE WELL BEFORE USING

USE RESTRICTIONS

Do not treat pets with this product.
Do not apply this product in a way that will contact adults, children, or pets, either directly or through drift.
Do not allow adults, children, or pets to enter the treated area until sprays have dried. Remove pets, birds, and cover fish aquariums before spraying.
Avoid contamination of food and feedstuffs. Remove or cover exposed food and drinking water before application.
Do not use in food handling establishments in which food is held, processed, prepared, and/or served.
Do not apply directly to animals.
Do not use in aircraft.

FOR OUTDOOR USES

All outdoor applications must be limited to spot or crack-and-crevice treatments only, except for the following permitted uses:

- (1) Treatment to soil or vegetation around structures;
- (2) Applications to lawns, turf, and other vegetation;
- (3) Applications to building foundations, up to a maximum height of 3 feet.

Other than applications to building foundations, all outdoor applications to impervious surfaces including sidewalks, driveways, patios, porches and structural surfaces (including windows, doors, and eaves) are limited to spot and crack-and-crevice applications, only.

Do not water the treated area to the point of run-off.

Do not make applications during rain.

Application is prohibited directly into sewers or drains, or to any area like a gutter where drainage to sewers, storm drains, water bodies, or aquatic habitat can occur. Do not allow this product to enter any drain during or after application.

NOTE: The application of this product to vinyl and aluminum siding (particularly lightly colored, aged, weathered or otherwise damaged) may result in staining, bleaching or discoloration. Factors including extreme heat and direct sunlight can promote damage. Before applying this product to vinyl or aluminum siding, treat a small area and evaluate 30 minutes later to allow any potential staining to occur. Regardless of the test results, do not apply to vinyl or aluminum siding while exposed to direct sunlight or during the heat of the day.

If you have a medical emergency, need consultation on diagnosis, therapy and analysis please call 1-(800)420-9347
If you have questions relating to product use or application, please call 1-(866)945-5033
If you have a product spill or transportation emergency call 1-(800)424-9300
For Consumer Refund: TechPac, LLC PO Box 95437 Palatine, IL 60095-0437

Storage and Disposal

Pesticide Storage: Store in original container in a cool dry area away from heat or open flame and in an area inaccessible to children and pets. Keep from freezing. **PESTICIDE DISPOSAL AND CONTAINER HANDLING:** Nonrefillable container. Do not reuse or refill this container. If empty: Place in trash or offer for recycling if available. If partly filled: Call your local solid waste agency for disposal instructions. Never place unused product down any indoor or outdoor drain.

The Directions for Use of this product must be followed carefully. It is impossible to eliminate all risks inherently associated with the use of this product. To the extent consistent with applicable law, User agrees to hold TechPac LLC and Seller harmless for any claims relating to such factors.

SPECIFIC USE DIRECTIONS

Sevin® Insect Killer Concentrate applied at 4 fl. oz. per gallon of water delivers a spray solution containing 0.011% zeta-cypermethrin. For all applications, this product provides control of each pest as listed in the Pest Table (see page 4).

MEASURING INSTRUCTIONS	<ul style="list-style-type: none"> • Shake well before use. • Remove measuring cap and fill cap according to chart below. • Pour into sprayer and add corresponding amount of water. 											
	<table border="1"> <thead> <tr> <th>Fl. Oz. of Sevin® Insect Killer Concentrate</th> <th>Amount of Water</th> </tr> </thead> <tbody> <tr> <td>1</td> <td>1 Quart (32 oz)</td> </tr> <tr> <td>2</td> <td>½ Gallon (64 oz)</td> </tr> <tr> <td>4</td> <td>1 Gallon (128 oz)</td> </tr> <tr> <td>6</td> <td>1½ Gallons (192 oz)</td> </tr> <tr> <td>8</td> <td>2 Gallons (256 oz)</td> </tr> </tbody> </table>	Fl. Oz. of Sevin® Insect Killer Concentrate	Amount of Water	1	1 Quart (32 oz)	2	½ Gallon (64 oz)	4	1 Gallon (128 oz)	6	1½ Gallons (192 oz)	8
Fl. Oz. of Sevin® Insect Killer Concentrate	Amount of Water											
1	1 Quart (32 oz)											
2	½ Gallon (64 oz)											
4	1 Gallon (128 oz)											
6	1½ Gallons (192 oz)											
8	2 Gallons (256 oz)											
PUMP-STYLE TANK SPRAYERS	<ul style="list-style-type: none"> • Close sprayer tightly and pressurize with hand pump. For spot applications, use a coarse spray nozzle. For larger area applications, use a fan spray nozzle. • Hold tip of wand 12 inches from target area while spraying. 											
DIAL-STYLE HOSE-END SPRAYERS	<ul style="list-style-type: none"> • Fill sprayer jar with enough product for the area to be treated. DO NOT ADD WATER. • Close sprayer, set dial, hook to garden hose and apply. • Pour any unused product back into the product's original container. 											
APPLICATION INSTRUCTIONS	<ul style="list-style-type: none"> • Apply where insects are expected to appear or when insects or damage are seen. Repeat as necessary according to site-specific directions listed below. • Apply in calm weather. • Begin spraying at the farthest point of the treatment area and work backward to avoid contact with wet treated surfaces. • Spray thoroughly to wet plant surface. Do not apply to point of runoff. • Sprays must be dry in treated areas before people or pets re-enter. • Do not apply to trees taller than 10 feet. Consider hiring a licensed professional. • Do not apply during rain. • Applications to impervious surfaces are limited to spot and crack and crevice treatments only. 											

GARDEN VEGETABLES

In the table below, the Pre-Harvest Interval (PHI) refers to the minimum number of days that must pass between the date of the last application and the date of harvest. Reapply no more than once every seven days if insects return and provided the Pre-Harvest Intervals are followed accordingly.

VEGETABLES	PHI (Days)
Brassica Vegetables: Broccoli, Chinese Broccoli (gai lan, white flowering broccoli), Brussels Sprouts, Cauliflower, Cavalo Broccoli, Kohlrabi, Cabbage, Chinese Cabbage (napa), Chinese Mustard Cabbage (gai choy), Broccoli Raab (rapini), Chinese Cabbage (bok choy), Collards, Kale, Mizuna, Mustard Greens, Mustard Spinach, Rape Greens, Turnip Greens	1 Day
Sweet Corn	3 Days
Cucurbit Vegetables: Chayote (fruit), Chinese Waxgourd (Chinese Preserving Melon), Citron Melon, Cucumber, Gherkin, Gourd (edible) (including hyotan, cucuzza, hechima, Chinese okra), <i>Momordica spp.</i> (includes balsam apple, balsam pear, bitter melon, Chinese cucumber), Muskmelon (includes true cantaloupe, cantaloupe, casaba, crenshaw melon, golden pershaw melon, honeydew melon , honey balls, mango melon, Persian melon, pineapple melon, Santa Claus melon, and snake melon), Pumpkin, Summer Squash (includes crookneck squash, scalloped squash, straightneck squash, vegetable marrow, zucchini), Winter Squash (includes butternut squash, calabaza, hubbard squash, acorn squash, and spaghetti squash), Watermelon (includes hybrids and varieties)	1 Day
Legume Vegetables - Succulent Edible-Podded Peas, Succulent Shelled Peas and Dried Shelled Peas: Dwarf Pea, Edible-pod Pea, Snow Pea, Sugar Snap Pea, Pigeon Pea, English Pea, Garden Pea, Green Pea, Lentil	1 Day (Succulent) 21 Days (Dried)
Legume Vegetables - Succulent Edible-Podded Beans, Succulent Shelled Beans, and Dried Shelled Beans: Runner Bean, Snap Bean, Wax Bean, Asparagus Bean, Chinese Longbean, Moth Bean, Yardlong Bean, Jackbean, Soybean (immature seeds), Swordbean, Lima Bean, Broad Bean (Fava Bean), Black-eyed Pea, Southern Pea, Grain Lupin, Sweet Lupin, White Lupin, White Sweet Lupin, Field Bean, Kidney Bean, Navy Bean, Pinto Bean, Tepary Bean, Adzuki Bean, Cajana, Cowpea, Crowder Pea, Moth Bean, Mung Bean, Rice Bean, Uri Bean, Chickpea (Garbanzo Bean), Guar, Lablab Bean	1 Day (Succulent) 21 Days (Dried)
Fruiting Vegetables: Eggplant, groundcherry (<i>Physalis spp.</i>), okra, pepino (melon pear), Pepper (includes bell pepper, chili pepper, cooking pepper, pimento, sweet pepper), tomatillo, tomato	1 Day
Leafy Vegetables: Amaranth (leafy amaranth, Chinese spinach, tampaia); Arugula (Rocket), Cardoon, Celery, Chinese Celery, Celuice, Chervil, Chrysanthemum (edible-leaved and garland), Cilantro (not for use on oregano grown for seed or coriander), Corn Salad, Cress (Garden, Upland (yellow rocket, winter cress)), Dandelion, Dock (sorrel), Endive (escarole), Fennel/Florence (finocchio), Garden Cress, Lettuce (head and leaf), Orach, Parsley, Purslane (garden), Purslane (winter), Radicchio (red chicory), Rhubarb, Spinach (including New Zealand and vine, Malabar spinach, Indian spinach), Swiss Chard	1 Day
Root and Tuber Vegetables (except sugar beets): Arracacha, Arrowroot, Artichoke (Chinese and Jerusalem), Garden Beet, Edible Burdock, Edible Cannia, Carrot, Cassava (Bitter and Sweet), Celeriac (Celery Root), Chayote (Root), Turnip-Rooted Chervil, Chicory, Chufa, Dasheen (Taro), Ginger, Ginseng, Horseradish, Leren, Turnip-Rooted Parsley, Parsnip, Potato, Oriental Radish (Daikon), Radish, Rutabaga, Salsify (Oyster Plant), Black Salsify, Spanish Salsify, Skirret, Sweet Potato, Tanier (Cocoyam), Turmeric, Turnip, Yam Bean, Yam (True)	1 Day
Sunflowers: Castor Oil Plant, Chinese Tallotree, Euphorbia, Evening Primrose, Jojoba, Niger Seed, Rose Hip, Stokes Aster, Tallwood, Tea Oil Plant, and Vernonia	30 Days

VEGETABLES	PHI (Days)
Bulb Vegetables (<i>Allium spp.</i>): Garlic, Garlic, Great-Headed (elephant), Green Eschalots, Japanese Bunching Onions, Leeks; Onion, Dry Bulb and Green; Onion, Welsh; Shallots, Dry Bulb and Green; Spring Onion or Scallions	7 Days
Peanuts	7 Days

BERRIES, FRUITS, AND NUTS

Use Sevin® Insect Killer Concentrate as a spot treatment for pest infestations on the berries, fruits and nuts listed below. Do not make applications to trees over 10 feet or trees with areas inaccessible to sprays. Apply spray mixture to upper and lower leaves, around fruit clusters, and on branches and trunks to wet thoroughly. Do not apply to the point of runoff. Reapply no more than once every seven days if insects return and provided the Pre-Harvest Intervals are followed accordingly.

BERRIES, FRUITS, AND NUTS	PHI (Days)
Berries Crop Group: Blackberry, loganberry, Red and black raspberry, blueberry, highbush and lowbush, currant, elderberry, gooseberry, huckleberry, cultivars and/or hybrids of these	1 Day
Grapes	1 Day
Pome Fruit Group: Apple, Crabapple, Loquat, Mayhaw, Pear, Oriental Pear, and Quince	14 Days
Stone Fruit Group: Apricot, Cherry (Sweet and Tart), Nectarine, Peach, Plum (including Chickasaw Plum, Damson Plum, and Japanese Plum), Plumcot, Prune (fresh)	14 Days
Tree Nuts Group: Almond, beech nut, Brazil nut, butternut, cashew, chestnut, chinquapin, filbert (hazelnut), hickory nut, macadamia nut, pecan, pistachio, walnut (black and English)	7 Days
Tropical Fruits: Avocado, Black Sapote, Canistel, Mamey Sapote, Mango, Papaya, Sapodilla, Star Apple	1 Day
Citrus Trees: Orange, Grapefruit, Lemon, Lime, Citrus Hybrids (including Tangelo), Mandarin, Tangerine, Pummelo, Calamondin, Citron, Kumquat	1 Day

ORNAMENTAL TREES, SHRUBS, FLOWERS, AND GROUND COVERS

Use Sevin® Insect Killer Concentrate as a spot treatment for pest infestations on ornamental trees, shrubs, flowers and ground covers. Spray up to the point of run-off making sure to cover all sides of leaves and trunk. For ground covers, bedding plants, foliage, annuals and perennials, apply as a uniform spray. Reapply if pests return but repeat applications should be limited to no more than once per seven days.

Certain plants including annuals may be sensitive to the final spray solution. A limited area should be treated and observed for one week prior to application to the entire planting.

OUTDOOR PERIMETER TREATMENTS

Apply to the point of run-off as a residual spray to vegetation including bushes and trees around buildings and other structures. For ants, apply to any trails, as a spot crack or crevice treatment around doors and windows and other places where ants may be found. To prevent pests from entering buildings, apply to a band of soil and vegetation 5 to 10 feet wide around and adjacent to the building. Also treat the building foundation to a height of up to 3 feet where pests are active and may find entrance. Apply as a coarse spray. The surface to be treated should be dry at the time of application.

LAWNS

Uniformly apply 4 fl. oz. Sevin® Insect Killer Concentrate per gallon of water per 250 sq ft area. For best results, apply after mowing (lawn should not be longer than 3 inches at the time of application). Repeat applications are necessary only if there are signs of renewed insect activity.

PESTS CONTROLLED
Caterpillars, Butterflies and Moths
Tent forming caterpillars, cocoon forming caterpillars, chrysalis forming caterpillars.
Leaf feeding caterpillars (including leaves of flowering plants, bushes and other ornamentals, vegetables and trees), azalea leafminers, green cloverworm, fruit eating caterpillars, legume feeding caterpillars, vegetable feeding caterpillars, stem and trunk boring caterpillars, and leafrolling caterpillars. Caterpillars of the Yucca Moth family including Fairy moths and Yucca moths. Clothes moth family; bagworm moth family, Gelechiid moth family including Potato tuber moths; Ermine Moth family including Alphanthus Webworm moth; Clear Winged moth family including Marroot borer, Squash Vine borer, Dolls Clearwing moth, California Sycamore borer; Tortricid Moth family (millers) including Fruit Tree Leafroller moth, Orange Tortrix, and Codling moth; Skippers including Least Skipper, Silver-spotted Skipper, and Long-tail Skipper; Swallowtails including Green swallowtail, Zebra Swallowtail, Giant Swallowtail (Orange Tail, Orange Puppy), Pale Swallowtail, Eastern Tiger Swallowtail, Eastern Black Swallowtail, Spicebush Swallowtail, and Phoebus; Whites, Sulphurs and Orange Tips family including Sara Orange Tip, Great Southern White, and European Cabbage Butterfly; Gossamer-Winged Butterflies Family including Great Purple Hairstreak, Spring Azure, Early Hairstreak, Eastern Tailed blue, Hairvester, Silvery Blue, Brown Elfin, Marine Blue, American Copper, and Gray Hairstreak; Metalmark family including Northern Metalmark, Shout Butterflies family including Common Shout Butterfly, Bush-footed Butterfly family including Gulf Fritillary, White Peacock, Harris' Checkerspot, Painted Lady (Thistle Butterfly), American Painted Lady (Painted Beauty), Baltimore Zebra (Yellow-barred Heliconian), Viceroy, White Admiral (Banded Purple), Mourning Cloak, Milbert's Tortoise Shell, Pearl Crescent, Question Mark, Buckeye, Great Spangled Fritillary, and Red Admiral; Hackberry and Goatweed Butterfly family including Hackberry butterfly, Satyr, Nymphs and Arctics family including Wood Nymph (American Grayling), White Wood Satyr, Eyed Brown (Grass Nymph), Pearly Eye, and Chryxus Arctic; Smoky Moth family including Grape Leaf Skeletonizer; Slug Caterpillar Moth family including Saddleback Caterpillar Moth; Pyralid Moths family including Mediterranean Flour Moth, Sod Webworm Moth, Indian Meal Moth, Meal Moth; Plume Moth family including Artichoke Plume Moth; Measuringworm Moth family including Tulip Tree Beauty, California Cankerworm Moth, and Large California Spanworm Moth; Tent Caterpillar Moth family including Western Tent Caterpillar Moth; Giant Silkworm Moth family including Luna Moth, Polyphemus moth, Io Moth, Promethia Moth (Spicebush Silkworm), Regal Moth (Royal Walnut Moth), Rosy Maple Moth, Imperial Moth, Sheep Moth, Cecropia Moth, and Cynthia Moth; Sphinx moth family including Virginia-creeper Sphinx, Pandora Sphinx, Hummingbird Moth (Common Clearwing), White-lined Sphinx, Tomato Hornworm Moth, Tobacco Hornworm Moth, Big Poplar Sphinx, Cerisy's Sphinx, and Wild-cherry Sphinx; Prominents family including Tentacled Prominents (Puss Moths), and Red-humped Appleworm Moth; Tiger Moth family including Ornate Tiger Moth, Yellow Woolly Bear Moth, Acraea Moth, Milkweed Tiger Moth, Spotted Tiger Moth, Colona, Woolly Bear Caterpillar Moth (Banded Woolly Bear), Lichen Moth, and Rattlebox Moth; Ctenuchid Moth family including Virginia Ctenuchid moth; Tussock moth family including Gypsy Moth, White-marked Tussock Moth; Owllet Moth family including Eight-spotted Forester, Black Witch, Alfalfa Looper, Sweetheart Underwing, Locust Underwing, and Hebrew
Common Bristletails
Silverfish Family including Silverfish, and Firebrat
Springtails
Podurid Springtail family including Snow Pea, Seashore Springtail; Entomobryid Springtail family including Ainsley's Springtail; Globular Springtail family
Cockroaches
Blattid Cockroach Family including Oriental Cockroach (Asiatic Cockroach, Shad Cockroach), and American Cockroach (Waterbug); Blattellid Cockroaches family including German Cockroach (Croton Bug)
Termites
Rotting-wood termite family including Pacific Coast Termite; Subterranean termite family including subterranean termites. Not intended to replace structural treatments. For termites – Do not use this product as the sole source of control for active, structural infestations by subterranean termites; the purpose of this application is to kill workers or winged reproductive forms of termites which are present at the time of treatment. It is not intended to provide structural pest

PESTS CONTROLLED - continued
Termites - continued
control. It is not a substitute for mechanical alteration, soil and foundation treatment, but merely a supplement. For active, structural infestations by subterranean termites, this product can only be used to supplement a federally registered conventional product that is registered as a sole source for termite control. This product will not eliminate termite infestations or provide protection against future infestation.
Earwigs
Long-Horned Earwig family including Ring-legged Earwig, and Riparian Earwig; Common Earwig family including European Earwig
Grasshoppers & Crickets
Pygmy Grasshopper family including Aztec Pygmy Grasshopper; Short-Horned Grasshopper family including Creosote Bush Grasshopper, Lubber Grasshopper, Painted Grasshopper, Carolina Locust, Dragon Lubber Grasshopper (Gray Dragon), Three-banded Grasshopper (Banded Range Grasshopper), Differential Grasshopper, Red-legged Locust, Spur-throated Grasshopper, Two-stopped Grasshopper, Panther-spotted grasshopper, Southeastern Lubber Grasshopper, Alutaea Bird Grasshopper, American Bird Grasshopper, Green Valley Grasshopper, Toothpick Grasshopper, Horse Lubber Grasshopper, Pallid-winged Grasshopper, and Great Crested Grasshopper (Dinosaur Grasshopper); Long-horned grasshoppers and Katydid family including Oblong-winged Katydid, Mormon Cricket, Short-legged Shield back Katydid, California Katydid, Angular-winged Katydid, Keeled Shield-back Katydid, Nebraska Cone-head, Gladiator Katydid, Mesclero Shield-back Katydid, True Katydid (Northern Katydid), and Fork-tailed Bush Katydid; Camel Crickets family including Spotted Camel Cricket, Secret Cove Cricket, Jerusalem Cricket, True Crickets family including House Cricket (Cricket on the Hearth), Field Cricket, California Tree Cricket, Snowy Tree Cricket, and Black-horned Tree Cricket; Mole Cricket family including Northern Mole Cricket and European Mole Cricket
True Bugs
Plant Bug family including Adelphocoris Plant Bugs, Scarlet Plant bugs, Tarnished Plant Bugs, and Four-lined Plant Bug; Assassin bug family including Bee Assassins, Wheel Bug; Ambush Bug family including Jagged Ambush Bug; Lace Bug family including Oak Lace Bug; Seed Bug family including Small Eastern Milkweed Bug, Long-necked Seed Bug, and Large Milkweed Bug; Stilt Bug family including Stilt Bugs; Leaf-footed Bug family including Florida Leaf-footed Bug, and Squash Bug; Scimitar Plant Bug family including Eastern Boxelder Bug and Western Boxelder Bug; Stink Bug family including Green Stink Bug, Brown Marmorated Stink Bug, Brochymenas, Two-spotted Stink Bug (Conspicuous Stink Bug), Harlequin Cabbage Bug (Calico Bug, Fire Bug), and Spined Soldier Bug
Cicadas and Kin
Cicada family including Periodical Cicadas, Dogday Harvestly, and Grand Western Cicada
Treehoppers
Treehopper family, including Thorn-mimic Treehopper, Oak Treehopper, Buffalo Treehopper, and Locust Treehopper
Leafhoppers
Leafhopper family including Grape Leafhopper, Scarlet-and-green Leafhopper, Sharpshooter, Spotted Lanternfly
Thrips
Banded Thrips family including Banded-wing Thrips; Common Thrips family
Beetles
Tiger Beetle Family including Beautiful Tiger Beetle, Dainty Tiger Beetle, Six-Spotted Green Tiger Beetle, and Dejean's Flightless Tiger Beetle; Ground Beetle family including Bombardier Beetle, Fiery Searcher (Caterpillar hunter), European Ground Beetle, Green Pubescent Ground Beetle, Common Black Ground Beetle, and Boat-backed Ground Beetle; Predacious Diving Beetle family including Small Flat Diving Beetle, Large Diving Beetle, and Marbled Diving Beetle; Whirligig Beetle family including Large Whirligig Beetle, and Small Whirligig Beetle; Hister Beetle family including Hister beetles; Rove Beetle family including Gold-and-brown Rove Beetle and Pictured Rove Beetle; Carrion Beetle family including Margined Burying Beetle, Tomentose Burying Beetle (Gold-necked

PESTS CONTROLLED - continued
Beetles - continued
Carrion Beetle), American Carrion Beetle, and Northern Carrion Beetle; Stag Beetle family including Elephant Stag Beetle, Agassiz's Flat-horned Stag Beetle, Reddish-brown Stag Beetle, and Rugose Stag Beetle; Bessbugs family including Patent-leather Beetle (Horned Passalus); Scarab Beetle family including European Chafers (adults), Flower Chafers (Fruit and Flower Chafers), Leaf Chafers, Rose Chafers, Tumblebugs, Goldsmith Beetle, Green Jumping Beetle, Brown Fruit Chafers, Glossy Pillbug, Grapevine Beetle, May Beetles (June Beetles), Ten-lined June Beetles, and Japanese Beetle; Metallic Wood-Boring Beetles including Golden Buprestid, Western Pine Borer (Sculptured Pine Borer), and Divergent Metallic Wood Borer (Flatheaded Cherry Tree Borer); Click Beetle family including Eastern Eyed Click Beetle (Big-eyed Click Beetle), and Fire Beetles; Fireflies (Lightning Bugs) family including Pyralis Firefly, and Pennsylvania Firefly; Soldier Beetle family including Pennsylvania Leather-wing, and Downy Leather-wing, Net-winged Beetle family including Banded Net-wing, and Golden Net-wing; Spider Beetle family including Spider Beetles, and Texan Spider Beetle; Branch and Twig Borer family including Apple Twig Borer, Checkered Beetle family including California Checkered Beetle, Elegant Checkered Beetle, Slender Checkered Beetle, and Red-blue Checkered Beetle; Flat Bark Beetle family including Red Flat Bark Beetle; Pleasing Fungus Beetle including Rough Fungus Beetle; Ladybug Beetles including Multicolored Asian Lady Beetles, Two-spotted Ladybug Beetle, Nine-spotted Ladybug Beetle, Spotted "Nine-spotted" Ladybug, Convergent Ladybug Beetle, and Ash Gray Ladybug Beetle; Darkling Beetles including Horned Fungus Beetle, Broad-necked Darkling Beetle, Plicate Beetle, Yellow Mealworm Beetle, and Ironclad Beetle; Fire-colored Beetles family including Fire Beetles; Blister Beetles family including Striped Blister Beetle, Arizona Blister Beetle, Short-winged Blister Beetle (Oil Beetle); Long-horned Beetle family including Black-horned Pine Borer, Yellow Douglass Fir Borer, Long-jawed Longhorn, Elder Borer (Coaked Knotty-horn), Twig Pruners, Pine Sawyer (Spined-neck Longhorn), Golden-haired Flower Longhorn, Locust Borer, Black Pine Sawyer (White Spotted Sawyer), Cylindrical Hardwood Borer, Cottonwood Twig Borer, Cottonwood Borer, Giant Root Borers, Ribbed Pine Borer, California Laurel Borer (Banded Alder Borer), Ivory marked Beetle, Red Milkweed Beetle (Eastern Milkweed Longhorn), Notch-tipped Flower Longhorn, and Willow Borer; Seed Borer family including Bean Weevil; Leaf Beetle family including Dogwood Calligrapha, Milkweed Tortoise Beetle (Argus Tortoise Beetle), Dogbane Leaf Beetle, Milkweed Leaf Beetle, Willow Leaf Beetle, Spotted Asparagus Beetle, Clavate Tortoise Beetle, Spotted Cucumber Beetle, Waterlily Leaf Beetle, Swamp Milkweed Leaf Beetle, Three-lined Potato Beetle (Old-fashioned Potato Bug), Colorado Potato Beetle, and Girdled Leaf Beetle; Primitive Weevil family including Oak Timberworm Beetle (Primitive Weevil); Snout Beetles and Weevil family including Boll Weevil, Black Oak Acorn Weevil, Lesser Cloverleaf Weevil, Alfalfa Weevil, Pine Weevils, Rose Weevils, Agrave Billbug, and Stored-grain Billbug (Granary Weevil, Elephant Bug); Bark and Ambrosia Beetle family including Red Turpentine Beetle, Pine and Spruce Engraver Beetles, and Bark Beetles
Bees, Ants, Wasps, Sawflies
Cimicid Sawflies family including Rusty Willow Sawfly, Common Sawfly family including Northeastern sawfly, Horntail family including Pigeon Horntail, and Smokey Horntails; Stem Sawflies family including Raspberry Horntail; Braconids family including Braconid Wasps; Ichneumons family including Giant Ichneumons, Short-tailed Ichneumons and Red-tailed Ichneumon; Torymid Wasp family including California Torymus; Chalcid family including Golden-yellow Chalcid; Gall Wasp family including California Oak Gall Wasps and Live Oak Gall Wasp; Pelecinid family including American Pelican; Tipich Wasp family including Five-banded Tipich Wasp; Velvet-Ants including Tristedown Velvet-ant, Red Velvet-ant, and Cow Killer; Spolid Wasp family including Scarab-hunter Wasp, and Digger Wasp; Ant family including Spine-waisted ants, Leafcutter ants, Texas Carpenter ants, Black Carpenter ants, Crater-nest ants, Crazy Ants, Tawny Crazy Ants, Texas Sheel-builder ant (Acrobat Ant), Red Ant, Legionary Ant, Little Black Ant, And Lands Honey Ant, Big-headed Ant, Honey Ant, and Fire Ant; Vespid Wasp family including Potter Wasp, Paper Wasps, Yellow Jackets, and Sandhills Hornet; Spider Wasps including Blue-black Spider Wasps, and Tarantula Hawk; Sphecid Wasp family including Thread-waisted Wasps, Eastern Sand Wasp, Steel-blue Cricket Hunter, Purplish-blue Cricket Hunter, Florida Hunting Wasp, Black and Yellow Mud Dauber, Cicada Killer, and Great Golden Digger Wasp; Bee families including Plasterer Bee, Yellow-faced Bees, Virescent Green Metallic Bees, Augochlora Green Metallic Bees, Alkali Bee, Mining Bee, Willow Mining Bee, Nevada Mining Bee, Clarkia Bee, Faithful Leafcutting Bee, Western Leafcutting Bee, Mason Bees, California Leafcutting Bee, Digger Bees, Western Cuckoo Bee, California Carpenter Bee

PESTS CONTROLLED - continued
Flies
Crane fly family including Wood-boring Tupulid, Giant Western Crane Fly, and Crane Flies; Phantom Crane Flies including Phantom Crane Fly; Net-winged Midges including Comstock's Net-winged Midge; Phantom Midges; Black Flies including Black Flies; March Flies family including March Flies; Fungus Gnats family including Fungus Gnats; Snipe Fly family including Gold-backed Snipe Fly; Siletto Fly family including Siletto Flies; Flower-loving Fly family including Flower-loving Fly; Mydas Fly family including Mydas fly; Robber Fly family including Bearded Robber Fly, Sacken's Bee Hunter, Giant Robber Fly, Bee Killer (Giant Robber Fly), and Robber Flies; Bee Flies including Bee Fly, Large Bee Flies, and Progressive Bee Flies; Dance Flies including Dance Flies; Long-Legged Flies including Condylostyid Long-legged Flies, and Texan Long-legged Fly; Hover Fly family including Woolly Bear Hover Flies, Elongate Aphid Flies, Drone Flies, Bulb Flies, American Hover Flies, and Toxomerus Hover Fly; Thick Headed Fly family including Thick headed fly; Pyrgotid Fly family including Pyrgotid Flies; Fruit Fly family including Walnut Husk Fly, and Apple Maggot Fly; Seaweed Fly family including California Seaweed Fly; Marsh Fly family including Marsh flies; Shore fly family including Yellowstone Bine Fly; Pomace fly family including Vinegar Fly; Anthomyid Fly family including Dung Fly; Muscid Fly family including House Fly, and Bling Stable Fly; Louse Fly family, Blow Fly family including Blue Bottle Fly, Screw-worm Fly, and Green Bottle Fly; Flesh Fly family including Flesh flies; Tachinid Fly family including Beelike Tachinid Fly, Early Tachinid Fly, Repetitive Tachinid Fly, Tachina Fly, and Fringe-legged Tachinid Fly
Spiders
Folding trapdoor spider family including Turret spider; Tarantula family including Desert Tarantula; Trapdoor Spider family including California Trapdoor spider; Dictynid spider family including Branch-yip spiders; Spitting spider family including Spitting spiders; Violin Spider family including Desert Loxosceles, and Violin Spider, Comb-footed Spider family including American House Spider; Sheet-web Weaver family including Hammock Spider; Orb Weaver family including Orb weavers, barn spider, Garden spider (cross spider), Marbled orb Weaver, Shamrock Spider, Six-spotted orb-weaver, Silver Argiope, Black-and-Yellow Argiope, Crablike Spiny Orb Weaver, Bola Spider, Arrow-shaped Micrathena, and Golden-silk spider (calico spider); Large-jawed Orb Weaver family including Mabel Orchard Spider, Venusta Orchard Spider, Elongate Long-jawed Orb Weaver, and Long-jawed Orb Weaver; Funnel Web Weaver family including Grass Spiders; Nursery Web Spider family including Brownish-grey Fishing Spider, Six-spotted Fishing spider, and Nursery Web Spider; Wolf Spider family including Burrowing Wolf Spiders, Carolina Wolf spider, Forest Wolf spider, rabid wolf spider, and Thin-legged Wolf spider; Lynx Spider family including Jumping Lynx spider, and green lynx spider, Sac Spider family including Ant-mimic spiders; Wandering spider family including Wandering spiders; Giant Crab spider family including Huntsman spider, and Golden Huntsman spider; Selenopid Crab Spider family including Selenopid Crab Spider; Crab Spider family including Goldenrod spider (flower spider, red-spotted Crab Spider), Elegant Crab Spider, Thrice-banded Crab Spider; Philodromid family including Inconspicuous Crab Spiders; Jumping Spiders including Green Lyssomanes, Dimorphic Jumping Spider, Metatid Jumping Spider, Ant-mimic Jumping spider, and Daring Jumping spider; Daddy-long-legs family including Eastern Daddy-long-legs and Brown Daddy-long-legs
Ticks
Blacklegged tick, Brown dog tick, Deer tick, Lone Star tick
Psyllid, Whiteflies, Aphids, Mealybugs, Scale Insects
Psyllid family including American Alder Psyllid; Whitefly family including Greenhouse Whitefly; Aphid family including Green Apple Aphid, Rosy Apple Aphid, Rose, Pea and Potato Aphid, Root Aphid, Coudy-winged Cottonwood Aphid, and Giant Willow Aphid; Woolly and Gall-Making Aphid family including Woolly Apple Aphid; Giant Scale Insects family including Cottony Cushion Scale; Armored Scale Insects family including Oyster Shell Scale; Mealybug family including Long-tailed mealybug; Cochineal Bug family including Cochineal bug
Millipedes
Millipedes including soft millipedes, Florida millipede, Almond millipede, North American millipede and flat millipedes

Plants	Pests	PHI (Days)	Plants	Pests	PHI (Days)
VEGETABLES			VEGETABLES		
Brassica vegetables: Broccoli, Chinese Broccoli (gai lan, white flowering broccoli), Brussels Sprouts, Cauliflower, Cavalo broccoli, Kohlrabi, Cabbage, Chinese Cabbage (napa), Chinese Mustard Cabbage (gai choy), Broccoli Raab (rapini), Chinese cabbage (bok choy), Collards, Kale, Mizuna, Mustard Greens, Mustard Spinach, Rape Greens, Turnip Greens	Com Earworm, Cucumber Beetles, Cutworm, Diamondback Moth, Flea Beetles, Imported Cabbageworm, Leafhoppers, Saltmarsh Caterpillar, Southern Cabbageworm, Tobacco Budworm, Alfalfa Looper, Armyworms, Cabbage Looper, Cabbage Webworm, Ground Beetles, Leafminers (adults), Lygus Bugs, Onion Thrips, Stinkbugs, Wireworm (adults), Aphids, and Whiteflies	Spray up to 1 day before harvesting	Legume Vegetables - Succulent and Dried Succulent Edible-Podded Peas, Succulent Shelled Peas and Dried Shelled Peas: Dwarf Pea, Edible-pod Pea, Snow Pea, Sugar Snap Pea, Pigeon pea, English Pea, Garden Pea, Green Pea, Lentil Legume Vegetables - Succulent Edible-Podded Beans, Succulent Shelled Beans, and Dried Shelled Beans: Runner Bean, Snap Bean, Wax Bean, Asparagus Bean, Chinese Longbean, Moth Bean, Yardlong Bean, Jackbean, Soybean (immature seed), Swordbean, Lima Bean, Broad Bean (Fava Bean), Black-eyed Pea, Southern Pea, Grain Lupin, Sweet Lupin, White Lupin, White Sweet Lupin, Field Bean, Kidney Bean, Navy Bean, Pinto Bean, Tepary Bean, Adzuki Bean, Catjang, Cowpea, Crowder Pea, Moth Bean, Mung Bean, Rice Bean, Urd Bean, Chickpea (Garbanzo Bean), Guar, Lablab Bean	Cutworms, Painted Lady (Thistle) Caterpillar, Saltmarsh Caterpillar, Silverspotted Skipper, Alfalfa Caterpillar, Armyworm, Southern Armyworm, True Armyworm, Yellow-Striped Bean Leaf Beetle, Blister Beetles, Colorado Potato Beetle, European Corn Borer, Corn Borer, Southwestern Corn Earworm, Corn Rootworm Beetle (adult), Cowpea Curculio, Cucumber Beetle, Flea Beetle, Green Cloverworm, Ground Beetles, Imported Cabbageworm, Japanese Beetle, Leaf Skeletonizers, Leafhoppers, Leafminers (adults), Mexican Bean Beetle, Pea Weevil, Pea Leaf Weevil, Plant Bugs, Potato Leafhopper, Seedcorn Beetle, Seedcorn Maggot (adult), Spittlebug, Three-Cornered Alfalfa Hopper, Tobacco Budworm, Velvetbean Caterpillar, Wireworms, Woolly Bear Caterpillar	Spray up to 1 day before harvesting on succulent shelled or edible-podded peas or beans, and up to 21 days before harvesting for dried shelled peas or beans
Sweet Corn	Chinch Bug, Corn Rootworm (Adult), Corn Silky, Cutworms, Flea Beetle, Leafhoppers, Japanese Beetle (Adult), Sap Beetle (adults), Tarnished Plant Bug, Armyworms, Corn Borers, Corn Earworm, Grasshoppers, Aphids	Spray up to 3 days before harvesting	Fruiting vegetables: Eggplant, groundcherry (<i>Physalis</i> spp.), okra pepino (Melon pear) pepper (includes bell pepper, chili pepper, cooking pepper, pimento, sweet pepper), tomatillo, tomato	Amyworm, Southern Armyworm, True Armyworm, Yellow-striped Celery Leaf Tier, Colorado Potato Beetle, Corn Borer, European Corn Borer, Southwestern Corn Earworm, Cucumber Beetle, Cutworm, Flea Beetle, Garden Webworm, Green Stink Bug, Hornworms, Leafminers (adults), Leafhoppers, Meadow Spittlebug, Pepper Maggot (adults), Pepper Weevil, Plant Bugs, Tobacco Budworm, Tomato Fruitworm, Tomato Pinworm, Aphids, Armyworm, Beet Armyworm, Fall Cabbage Looper, Grasshoppers, Lygus Bugs, Brown Stink Bug, Tomato Psyllid, Thrips, Whiteflies	Spray up to 1 day before harvesting
Cucurbit vegetables: Chayote (fruit), Chinese Waxgourd (Chinese Preserving Melon), Citron Melon, Cucumber, Gherkin, Gourd (edible) (including hyotan, cucuzza, hechima, Chinese okra), <i>Momordica</i> spp. (includes balsam apple, balsam pear, bitter melon, Chinese cucumber), Muskmelon (hybrids and/or cultivars of <i>Cucumis melo</i>) (includes true cantaloupe, cantaloupe, casaba, crenshaw melon, golden pershaw melon, honeydew melon, honey balls, mango melon, Persian melon, pineapple melon, Santa Claus melon, and snake melon), Pumpkin, Summer Squash (includes crookneck squash, scallop squash, straightneck squash, vegetable marrow, zucchini), Winter Squash (includes butternut squash, calabaza, hubbard squash, acorn squash, and spaghetti squash), Watermelon (includes hybrids and varieties)	Cutworms, Cabbage Looper, Cucumber Beetles (adult), Leafhoppers, Melonworm, Pickleworm, Rindworm, Squash Bug, Squash Vine Borer, Corn Earworm, Plant Bugs, Stinkbugs	Spray up to 1 day before harvesting	Leafy vegetables: Amaranth (leafy amaranth, Chinese spinach, tampala), Arugula (Rouquette), Cardoon, Celery, Chinese Celery, Celtuce, Chervil, Chrysanthemum (edible-leaved and garland), Cilantro (not for use on cilantro grown for seed or	Corn Earworm Cucumber Beetles, Cutworms, Diamondback Moth, Flea Beetles Imported Cabbageworm, Leafhoppers, Saltmarsh Caterpillar, Tobacco Budworm, Armyworms, Looper, Lygus Bugs, Onion Thrips, Stink Bugs, Wireworm	Spray up to 1 day before harvesting

Plants	Pests	PHI (Days)	Plants	Pests	PHI (Days)
VEGETABLES			VEGETABLES		
coriander) Corn Salad, Cress (Garden, Upland (yellow rocket, winter cress)), Dandelion; Dock (sorrel), Endive, (escarole), Fennel/Florence (finochio), Garden Cress, Lettuce (head and leaf), Orach, Parsley, Purslane (garden), Purslane (winter), Radicchio (red chicory), Rhubarb, Spinach (including New Zealand and wine, Malabar spinach, Indian spinach), Swiss chard	Corn Earworm Cucumber Beetles, Cutworms, Diamondback Moth, Flea Beetles Imported Cabbageworm, Leafhoppers, Saltmarsh Caterpillar, Tobacco Budworm, Armyworms, Loopers, Lygus Bugs, Onion Thrips, Sink Bugs, Wireworm	Spray up to 1 day before harvesting	Peanuts	Cutworm spp., Green Cloverworm, Velvetbean Caterpillar, Red-necked Peanut Worm, Bean Leaf Beetle, Leafhopper spp., Southern Corn Rootworm (adult), Vegetable Weevil, Whitefringed Beetle (adult), Aphid spp., Armyworm, Beet, Fall Armyworm, Corn Earworm, Grasshopper spp., Lesser Cornstalk Borer, Soybean Looper, Stink Bug spp., Tobacco Thrips	Spray up to 7 days before harvesting
Root & Tuber Vegetables (except sugar beets): Arracacha, Arrowroot, Artichoke (Chinese and Jerusalem), Garden Beet, Edible Burdock, Edible Canna, Carrot, Cassava (Bitter and Sweet), Celeriac (Celery Root), Chayote (Root), Turnip-Rooted Chervil, Chicory, Chufa, Dasheen (Taro), Ginger, Ginseng, Horseradish, Leren, Turnip-Rooted Parsley, Parsnip, Potato, Oriental Radish (Daikon), Rutabaga, Salsify (Oyster Plant), Black Salsify, Spanish Salsify, Skirret, Sweet Potato, Tanier (Cocoyam), Turmeric, Turnip, Yam Bean, Yam (True)	Cutworms, Cabbage Looper Cucumber Beetle, European Corn Borer, Flea beetles, Leafhoppers, Southern Corn Rootworm (adult), Vegetable Weevil, White fringed Beetle (adult), Armyworm, Beet Armyworm, Yellow striped Cabbage Maggot, Colorado Potato Beetle, Grasshoppers, Imported Cabbageworm, Potato Leafhopper, Potato Psyllid, Potato Tuberworm, Tarnished Plant Bug	Spray up to 1 day before harvesting	BERRIES, FRUITS, AND NUTS		
Sunflowers: Castor Oil Plant, Chinese Tallowtree, Euphorbia, Evening Primrose, Jojoba, Niger Seed, Rose Hip, Stokes Aster, Tallowwood, Tea Oil Plant, and Vernonia	Cutworm spp., White Grub, Wireworm	Spray up to 30 days before harvesting	Berries Crop Group: Blackberry, loganberry, red and black raspberry, blueberry, highbush and lowbush, currant; elderberry, gooseberry, huckleberry, cultivars and/or hybrids of these	Leafrollers, Orange Tortrix, Root Weevils	Spray up to 1 day before harvesting
Bulb Vegetables (<i>Allium</i> spp.), Garlic, Garlic, Great-Headed (elephant), Green Eschalots, Japanese Bunching Onions, Leeks, Onion, Dry Bulb and Green, Onion, Welch, Shallots, Dry Bulb and Green, Spring Onion or Scallions	Armyworms, Cutworms, Leafminers (adults), Onion Maggot Adults, Stink Bugs, Aphids, Onion Thrips	Spray up to 7 days before harvesting	Grapes	Eastern Grape Leafhopper, Variegated Leafhopper, Western Grape Leafhopper, and Spotted Lanternfly	Spray up to 1 day before harvesting
			Pome Fruit Group: Apple, Crabapple, Loquat, Mayhaw, Pear, Oriental Pear, and Quince	Apple Maggot, Codling Moth, European Apple Sawfly, Green Fruitworm, Japanese Beetle, Lesser Appleworm, Oblique Banded Leafroller, Oriental Fruit Moth, Pandemis Leafroller, Pear Psylla, Plum Curculio, Potato Leafhopper, Redbanded Leafroller, Rosy Apple Aphid, Spirea Aphid, Spotted Tentiform Leafminer, Stink Bugs, Tarnished Plant Bug, Tufted Apple Bud Moth, Variegated Leafroller, White Apple Leafhopper, Spotted Lanternfly	Spray up to 14 days before harvesting
			Stone Fruit Group: Apricot, Cherry (Sweet and Tart), Nectarine, Peach, Plum (including Chickasaw Plum, Damson Plum, and Japanese Plum), Plumcot, Prune (fresh)	American Plum Borer, Black Cherry Aphid, Cherry Fruit Fly, Green Fruitworm, Leafrollers, Leafhoppers, Lesser Peach Tree Borer, Peach Tree Borer, Peach Twig Borer, Plum Curculio, Oriental Fruit Moth, Rose Chafer, Spotted Lanternfly, Sink Bugs, Tarnished Plant Bug, Tufted Apple Budmoth, Western Cherry Fruit Fly, Spotted Lanternfly	Spray up to 14 days before harvesting
			Tree Nuts Group: Almond, beech nut, Brazil nut, butternut, cashew, chestnut, chinquapin, hilibert (hazelnut), hickory nut, macadamia nut, pecan, pistachio, walnut (black and English)	Black Pecan Aphid, Codling Moth, Filbert Worm, Hickory Shuckworm, Leaf-footed Bugs, Navel Orangeworm, Oblique-banded Leafroller, Peach Twig Borer, Pecan Leaf Casebearer, Pecan Nut Casebearer, Pecan Phylloxera, Pecan Weevil, Plant Bugs, Stink Bugs, Walnut Aphid, Walnut Husk Fly, Yellow Pecan Aphid	Spray up to 7 days before harvesting Do not apply more than 12 oz of this product per 1,000 sq.ft.

Plants	Pests	PHI (Days)	NOTES
BERRIES, FRUITS, AND NUTS			
Tropical Fruits: Avocado, Black Sapote, Canistel, Mamey Sapote, Mango, Papaya, Sapodilla, Star Apple		Spray up to 1 day before harvesting	
Citrus Trees: Orange, Grapefruit, Lemon, Lime, Citrus Hybrids (including Tangelo), Mandarin, Tangerine, Pummelo, Calamondin, Citron, Kumquat		Spray up to 1 day before harvesting	

NOTES
